

Hyperion Water Reclamation Plant

Hyperion Membrane Bioreactor Pilot Facility



The Project

The Hyperion Membrane Bioreactor (MBR) Pilot Facility, a joint effort between LASAN and LADWP, serves as a key component of the Pure Water Los Angeles Program (PWLA). The purpose of this project is to assess the performance of MBR-based advanced treatment technology to support the future conversion of Hyperion into a potable reuse facility under PWLA.

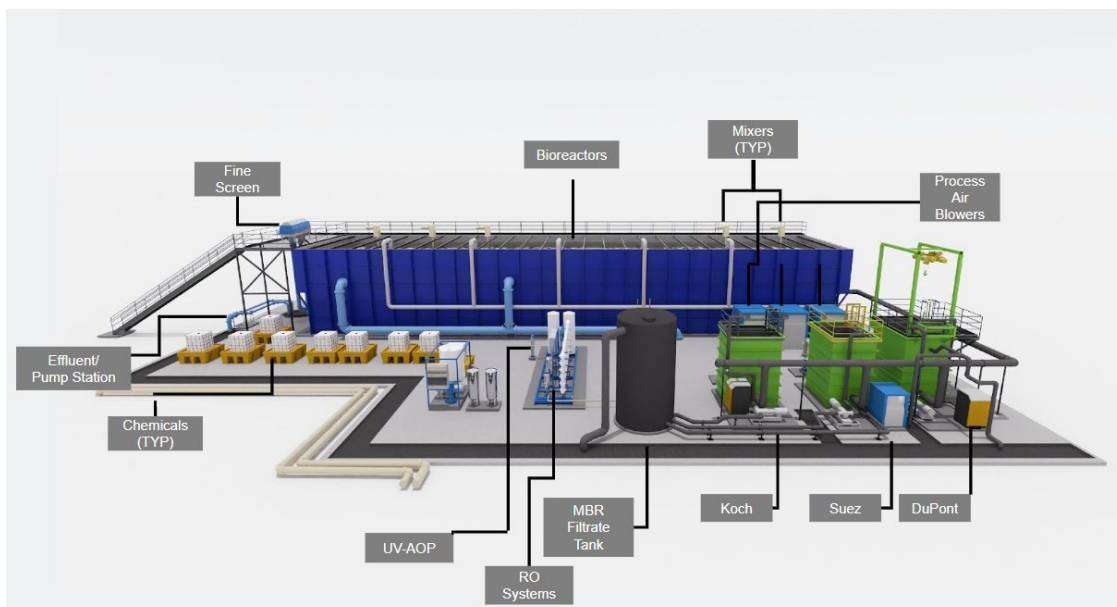


Key Objectives

The Hyperion MBR Pilot Facility will address the following objectives:

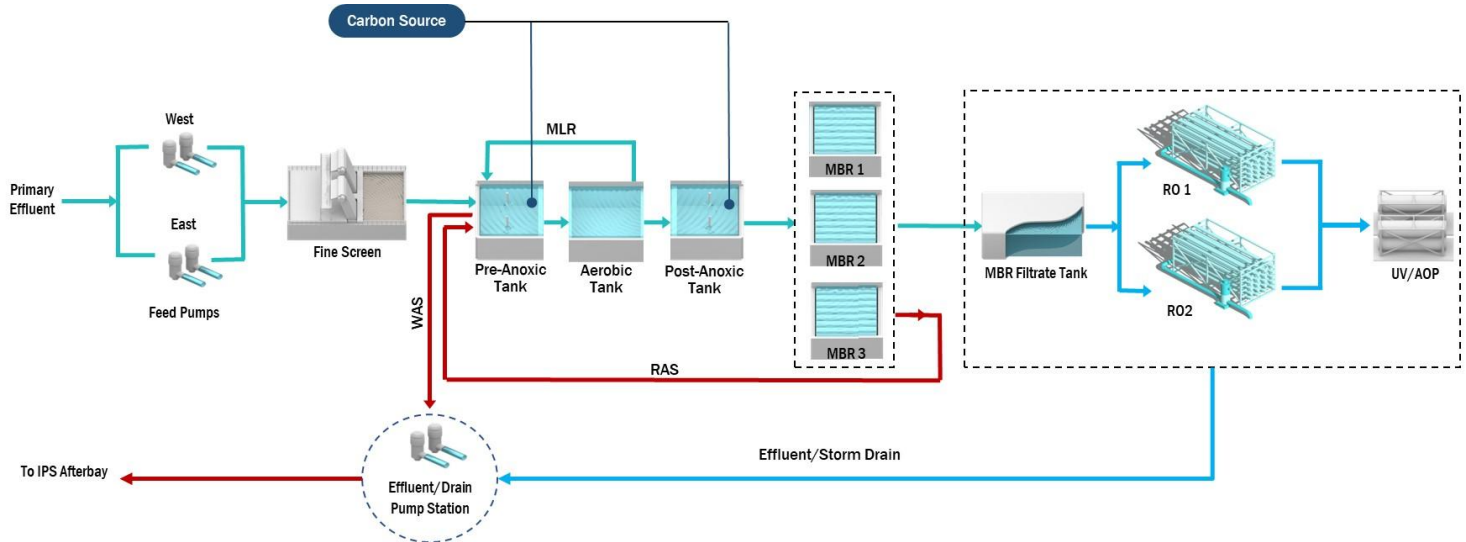
- Demonstrate regulatory compliance of MBR, Reverse Osmosis (RO) and Ultraviolet/Advanced Oxidation Process (UV/AOP) for the removal of pathogens and contaminants.
- Compare MBR systems from three major vendors.
- Develop design criteria for the future conversion of Hyperion under PWLA.
- Develop estimates for capital and operation and maintenance costs for the future conversion of Hyperion.

Project Milestones



Treatment Process

The Hyperion MBR Pilot Facility consists of full-sized membranes from three MBR manufacturers, two RO trains, and a benchtop UV/AOP system. A MBR is the combination of a membrane separation process (microfiltration or ultrafiltration) with a biological wastewater treatment process. RO is a water purification process that removes dissolved solids, organics, and pathogens, and a wide range of chemicals. Ultraviolet Treatment with Advanced Oxidation Process (UV/AOP) provides additional inactivation for pathogens and oxidizes residual chemical constituents.



LASAN Clean Water Program:

LASAN serves more than four million people and operates and maintains the largest wastewater treatment and collection systems in the United States. LASAN serves Los Angeles and 29 contracting cities and agencies, has more than 6,700 miles of public sewers and conveys over 300 million gallons per day of flow from residences and businesses to LASAN's four water reclamation plants.

Hyperion Water Reclamation Plant:

HWRP is located in Playa Del Rey. Established in 1894, it is the largest of the four water reclamation plants with an average flow of 260 million gallons per day.

Project Partner:



For more information contact:
sanrecycledwater@lacity.org

(800) 773-2489
24HR Customer Care Center

To learn more visit:
www.lacitysan.org/recycledwater

As a covered entity under Title II of the Americans with Disabilities Act, the City of Los Angeles does not discriminate on the basis of disability and, upon request, will provide reasonable accommodation to ensure equal access to its programs, services and activities.

