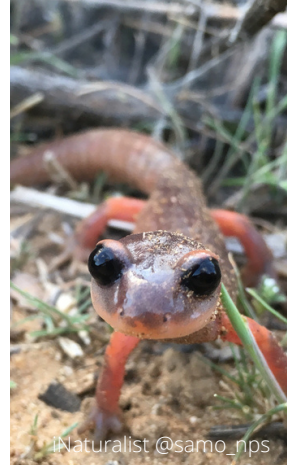


LA Sanitation and Environment: Community Wildlife Habitat

Gardening For Wildlife

The City of Los Angeles is partnering with the National Wildlife Federation to become the nation's largest certified Community Wildlife Habitat! Wildlife habitats are gardens and green spaces designed with wildlife in mind, providing food and shelter for local animals. Habitats should be managed using sustainable practices (e.g., smart water use, not using chemical pesticides).



iNaturalist @samo_nps

Habitat Elements



iNaturalist @beebirdsbugs

Native plants provide everything that wildlife need to survive. A healthy native plant community restores the landscape, enhances climate resilience, and makes for a uniquely beautiful garden.

Certify your home, apartment building, community space or school today! It's simple. To be certified, your habitat must provide the following elements for wildlife:

1. Food

Plants grow berries, seeds, and many other types of food.

2. Water

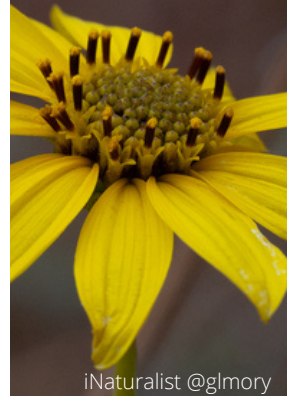
Everyone needs water. This can be as simple as a shallow dish filled with water and a few rocks.

3. Shelter

Plant densely to create cover. Logs and rocks provide shelter as well.

4. Places to Raise Young

Many animals require specific native plants to raise their young. Some species prefer tall trees, while others like thick shrubs.



iNaturalist @glmory



iNaturalist @glmory

Homes & Common
Areas

Schools

nwf.org/certify

nwf.org/schoolyard

Photo credit Emily Cobar



Learn More:
lacitysan.org/habitat

iNaturalist @glmory