

# The Future of Los Angeles, or...



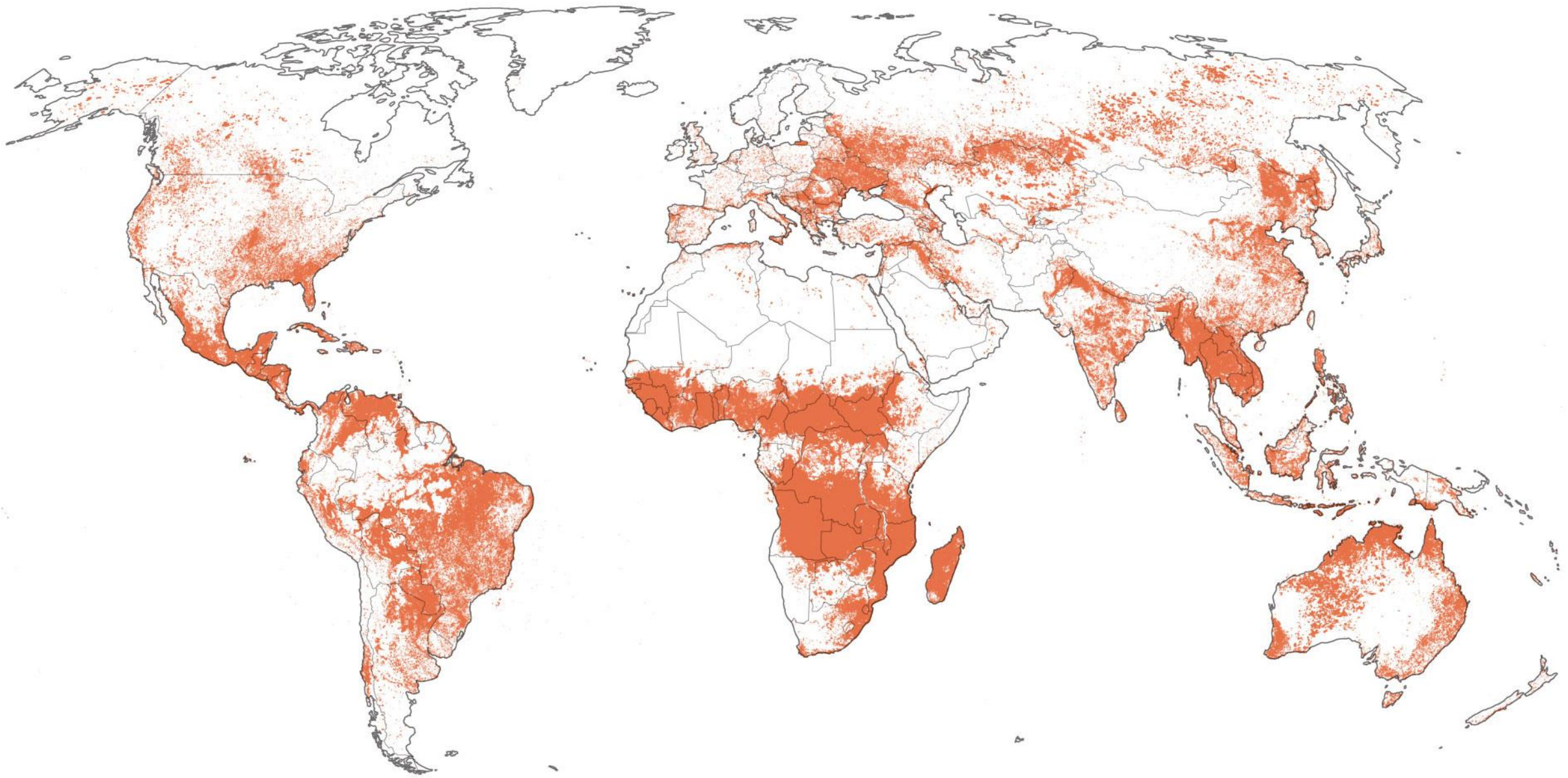
# The Future of Los Angeles



# **I'm a woman who fought wildfires for 7 years. Climate change is absolutely making them worse.**

Warmer climate is creating the perfect conditions for long wildfire seasons in the West.

By Anastasia Selby | Updated Nov 12, 2018, 11:10am EST



# Global Wildfires Detected By NASA, Aug. 2018-2019

Source: NASA

by The New York Times

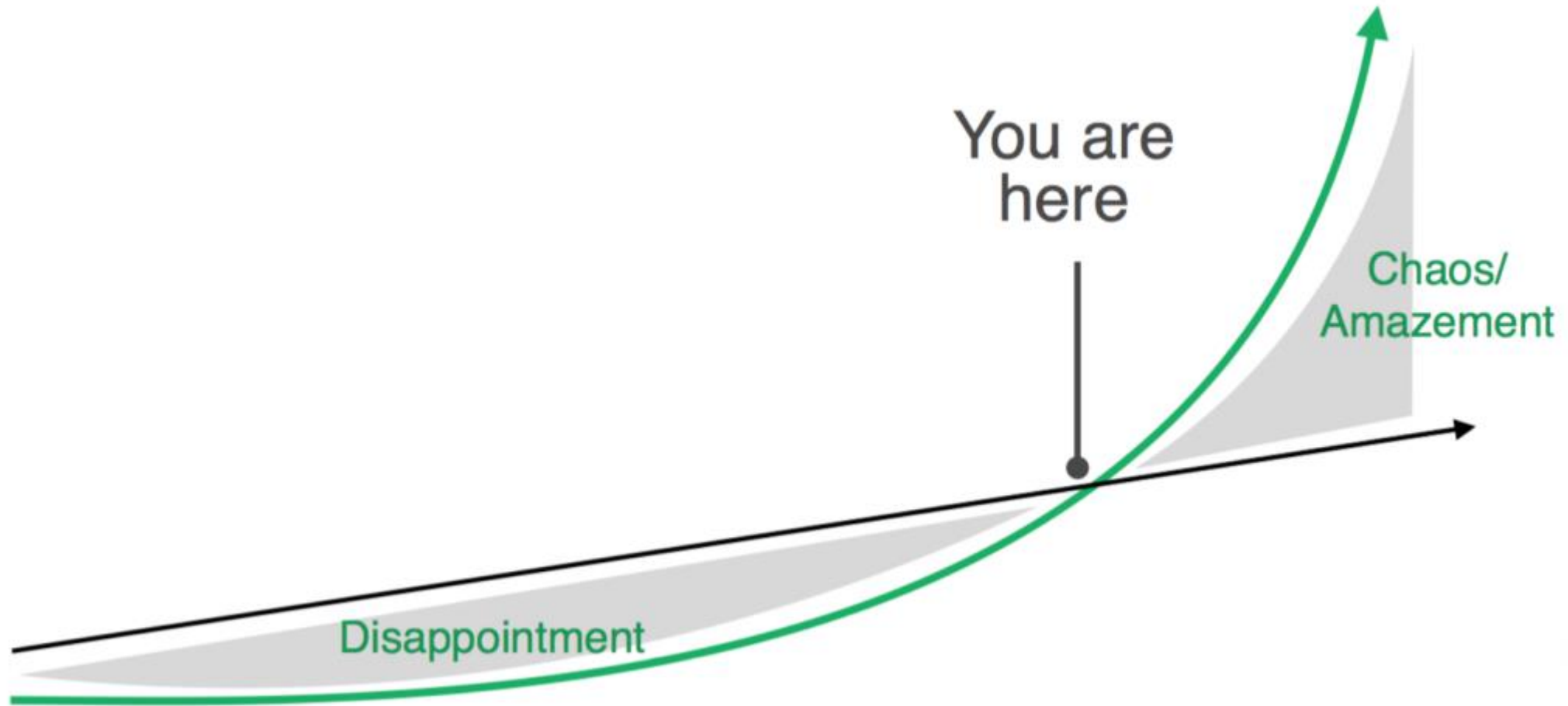
**The New York Times**

*Climate Change Threatens the World's  
Food Supply, United Nations Warns*

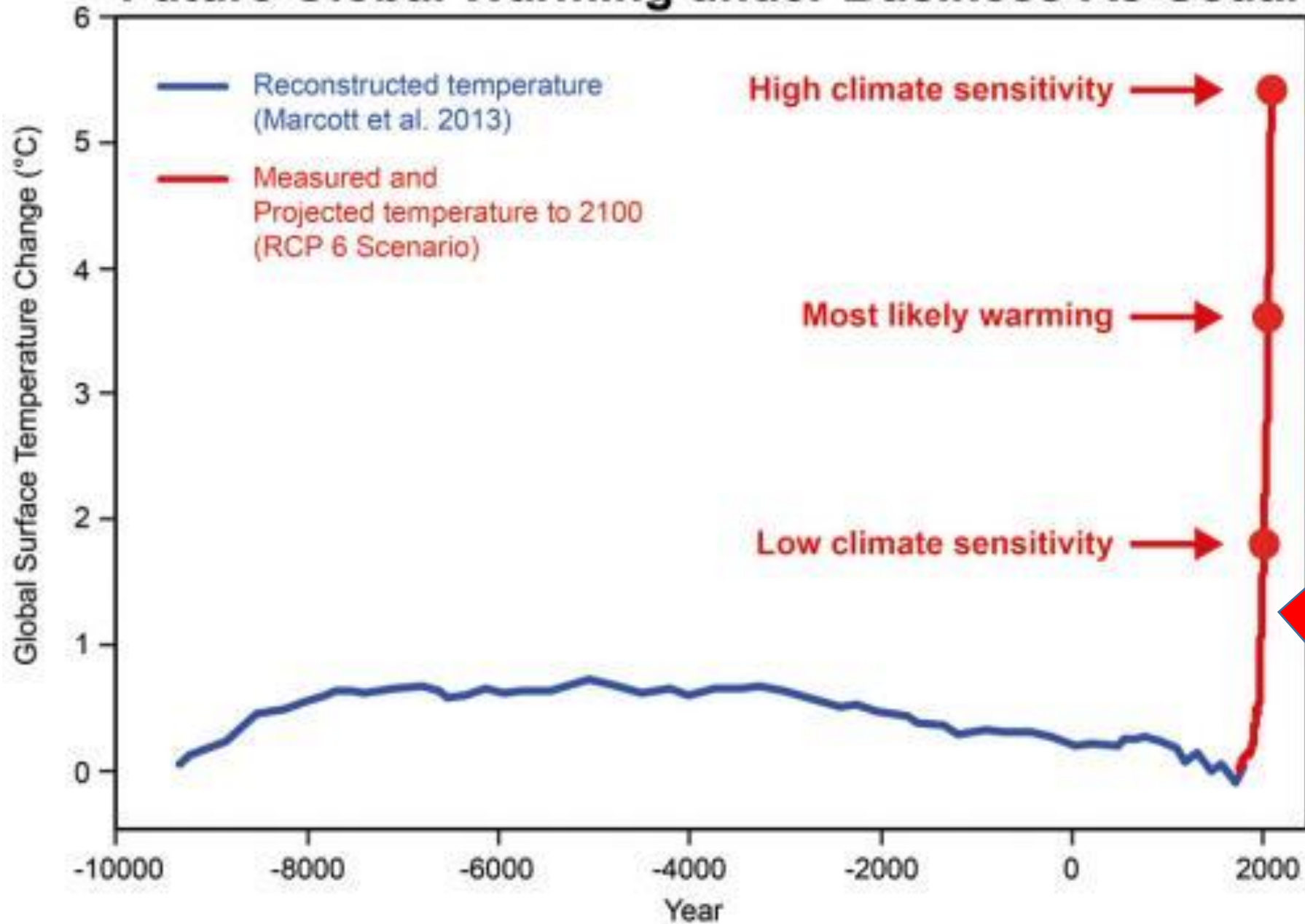




# Deception of linear vs exponential



# Future Global Warming under Business-As-Usual



WE  
ARE  
HERE

**Forbes**

# Greenland's Massive Ice Melt Wasn't Supposed To Happen Until 2070



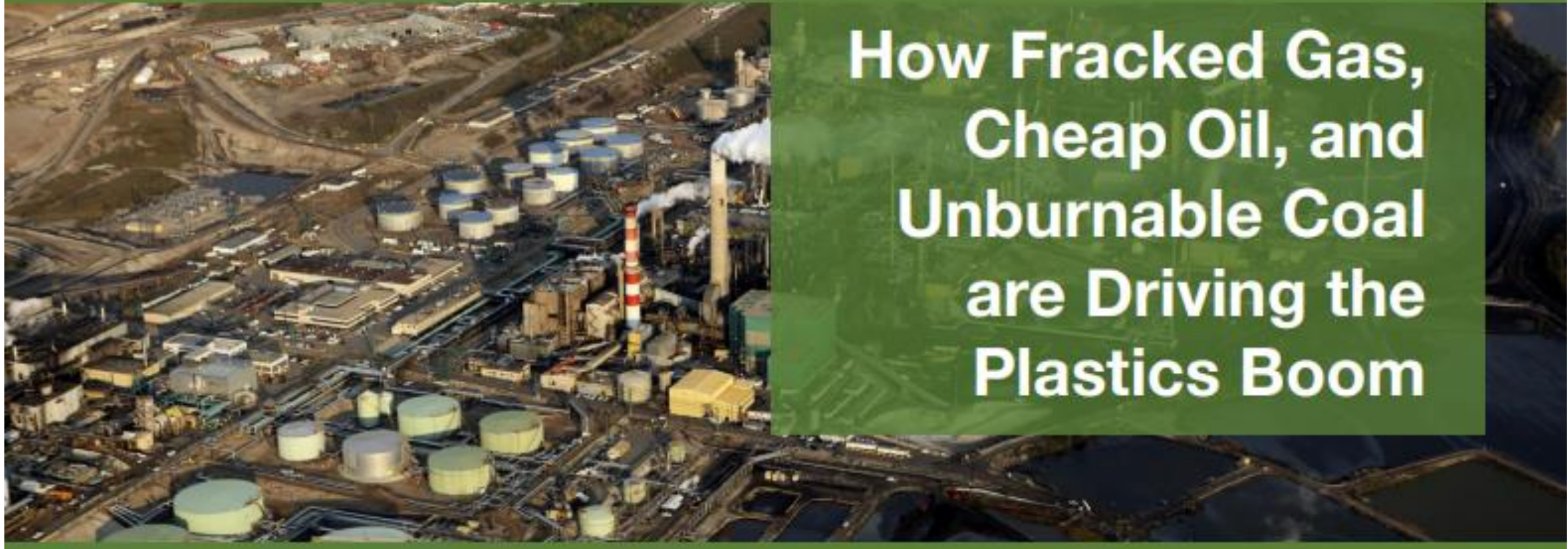
**Scott Snowden**  
Science





## *Fueling Plastics*

**How Fracked Gas,  
Cheap Oil, and  
Unburnable Coal  
are Driving the  
Plastics Boom**



# \$180bn investment in plastic factories feeds global packaging binge

**Colossal funding in manufacturing plants by fossil fuel companies will increase plastic production by 40%, risking permanent pollution of the earth**

The growing role of petrochemicals is one of the key “blind spots” in the global energy debate. The diversity and complexity of this sector means that petrochemicals receive less attention than other sectors, despite their rising importance.

# Plastic pollution risks 'near permanent contamination of natural environment'

**First global analysis of all mass-produced plastics has found humans have produced 8.3bn tonnes since the 1950s with the majority ending up in landfill or oceans**



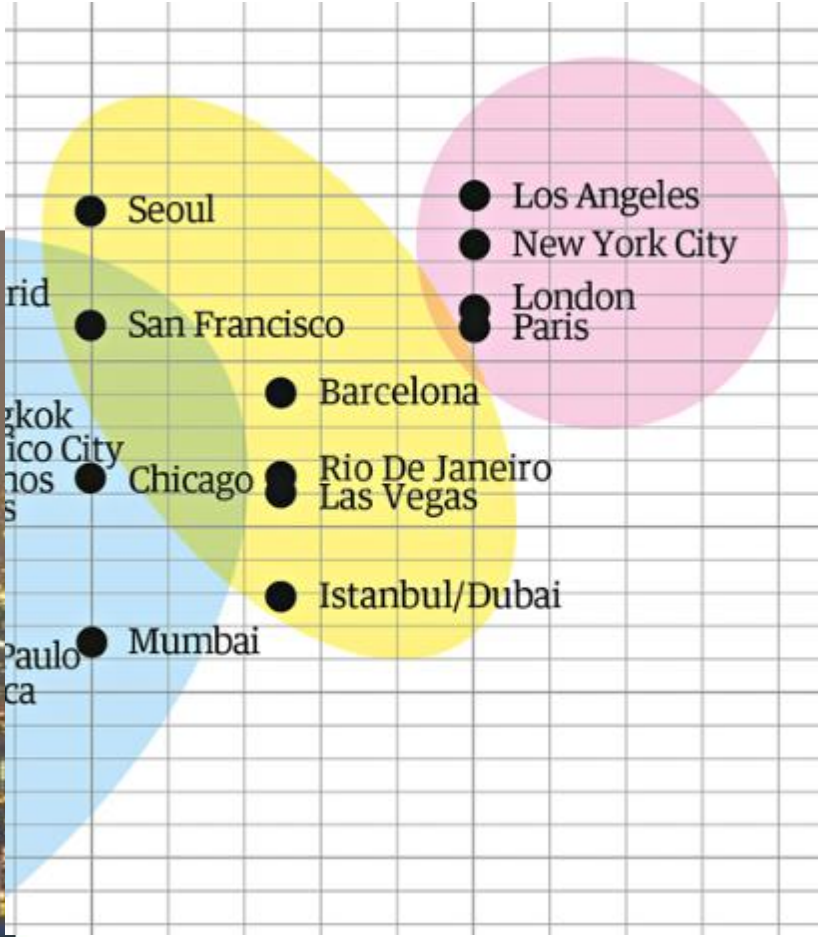
▲ Plastic bottles and other debris gather on the banks of the Anacostia River in Washington DC. Plastic has now outstripped most other man-made materials. Photograph: Jim Lo Scalzo/EPA





**GREEN SWORD**

# The Guardian: LA ranks No. 1 in international survey of cities with best urban brands



# Poland Spring to use 100% recycled plastic for bottles

By DAVID SHARP June 3, 2019

---



Poland Spring to use 100% recycled plastic for bottles

By DAVID S

# REBBL Releases Impact Report, Announces Conversion to 100 Percent Post-Consumer Recycled Bottles in 2020

[Press Release](#) | Nov. 12, 2019 at 3:00 pm

**EMERYVILLE, Calif.**— Functional plant-based beverage brand REBBL has announced the release of its inaugural Impact Report, highlighting the company's journey in social and environmental impact work – both the milestones, along with the inevitable challenges.

Founded by global non-profit Not for Sale (NFS) to help fight human trafficking, REBBL was born out of a mission to create a better future for people and the planet.



Poland Spring to use 100% recycled plastic for bottles

By DAVID S.

## RFERRI Releases Impact Report



PRESS RELEASE

Unilever:

Dove Moves to 100% Recycled Plastic Bottles, and Plastic-free Packs for its Beauty Bar

better future for people and the planet.

# Soil Conservation Act

## April 27, 1935

Inspiring participation in global regeneration, starting with soil.



**KISS**  
- the -  
**GROUND**



Courtesy: Creative Commons – CCO 1.0

# The Basics of Textile Recycling

Growth of Textile Recycling Promises to Divert More Material from Landfills

# CRADLE-TO-CRADLE

## OUTLINE OF A CIRCULAR ECONOMY

### PRINCIPLE

# 1

Preserve and enhance natural capital by controlling finite stocks and balancing renewable resource flows  
 ReSOLVE levers: regenerate, virtualise, exchange



Regenerate    Substitute materials    Virtualise    Restore

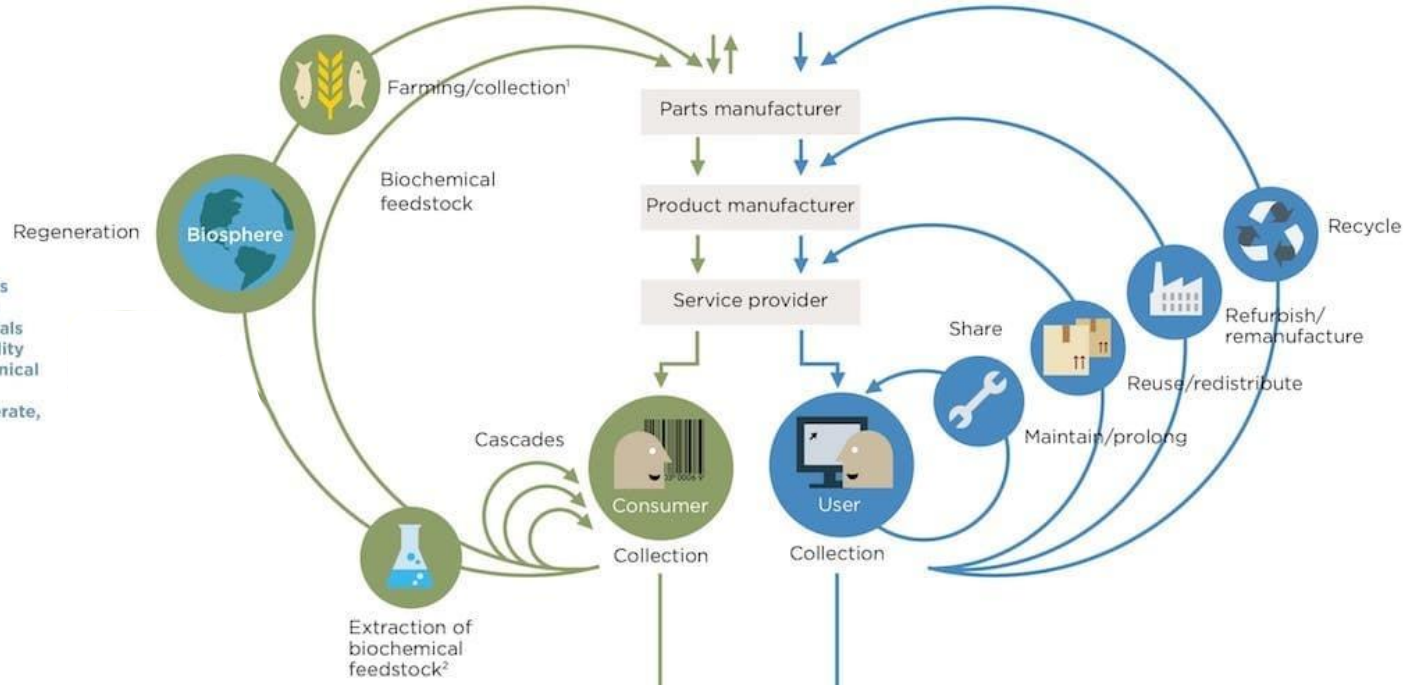
Renewables flow management

Stock management

### PRINCIPLE

# 2

Optimise resource yields by circulating products, components and materials in use at the highest utility at all times in both technical and biological cycles  
 ReSOLVE levers: regenerate, share, optimise, loop



### PRINCIPLE

# 3

Foster system effectiveness by revealing and designing out negative externalities  
 All ReSOLVE levers

Minimise systematic leakage and negative externalities

1. Hunting and fishing  
 2. Can take both post-harvest and post-consumer waste as an input  
 Source: Ellen MacArthur Foundation, SUN, and McKinsey Center for Business and Environment; Drawing from Braungart & McDonough, Cradle to Cradle (C2C).





Photo: NASA

COUNCILMEMBER • 5TH DISTRICT • CITY OF LOS ANGELES

**Paul Koretz**



**REACH ME VIA:**

**Andy Shrader**

*Director of Environmental Affairs,  
Water Policy & Sustainability*

(213) 473-7005

[andy.shrader@lacity.org](mailto:andy.shrader@lacity.org)