

LA SANITATION & ENVIRONMENT SPECIAL PROJECTS



Renewable Energy

- The Hyperion Bioenergy Facility converts 7.5m cubic feet of methane produced during the digestion process to renewable energy that powers the Hyperion Water Reclamation Plant (HWRP). This combined cycle cogeneration facility produces electricity and steam power to meet power and thermal needs, improves energy generation reliability and efficiency, and utilizes digester gas for clean energy generation.
- Our Lopez Canyon Environmental Center is a closed landfill site with an active methane gas collection system consisting of 450 wells, gas header lines, and 7 landfill gas flares which generate 3400 cfm of landfill gas.



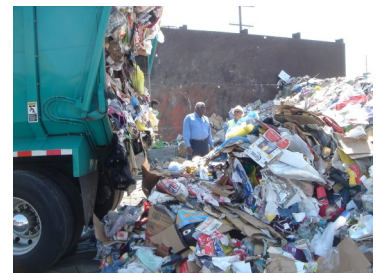
100% Recycled Water

- Mayor Eric Garcetti announced as part of LA's Green New Deal that LA will recycle 100% of its wastewater and source 70% of our water locally by 2035.
- The Advanced Water Purification Facility (AWPF) at Terminal Island Water Reclamation Plant consists of microfiltration, reverse osmosis, and advance oxidation disinfection to produce up to 6 million gallons per day (MGD) of highly cleansed recycled water, which is used to protect the groundwater reservoirs from intrusion of seawater by injection into the Dominguez Gap Barrier. The expansion project will double the amount.
- Hyperion Water Reclamation Plant, the largest west of the Mississippi, will construct a 1.5 MGD AWPF to serve LAX and HWRP by 2022, transforming HWRP to a water production facility to meet the City's water demands.



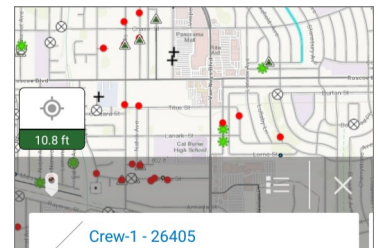
Recycling and Hazardous Waste Management

- Staff participate in design, permitting, and construction of hazardous material disposal facilities while following changes in the recycling marketplace and researching innovative options.
- Teams handle waste characterization as well as disposal and recycling of organic waste from both businesses and residences.



Geographic Information System (GIS) Mapping

- The GIS team converted collection routes to digital form, then optimized routes to improve efficiencies. Future incorporation of GPS data can further enhance operations.
- Field data capture and internal analysis of both spatial and attribute data for recycling contamination, billing disputes, service fulfillments, service route generation, etc. helps us to streamline operations while saving money and accomplishing more with less. Reference maps help convey spatial information to City leadership and the public for better decision-making.



Clean Fuel

- LASAN has one of the largest clean fuel fleets in the nation with plans to electrify most of its light-duty, medium-duty, and heavy-duty vehicles over the next decade.

Learn more: LACITYSAN.ORG



LA SANITATION & ENVIRONMENT SPECIAL PROJECTS



Regulatory Affairs

- LASAN's Climate Action Program calculates and reports greenhouse gas for the City of Los Angeles as well as community emissions.
- Staff tracks new and changing federal, state, and local legislation and regulations that impact water, recycling, organics diversion, climate change, and more. They also provide feedback on the organization's behalf to support the City's policies that protect public health and the environment.



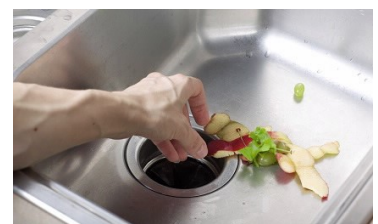
Industrial Waste Management

- The team focuses on reducing pollutants in the urban water system through the administration of the Industrial Waste Source Control and Pretreatment Program, achieving a 93 percent environmental compliance with federal pretreatment standards. The Fats, Oil and Grease (FOG) program reduces sanitary sewer overflows and minimizes public health risks.
- Program goals include administering source control and pollution prevention programs to reduce industrial emissions; demystifying environmental regulations for business owners while providing compliance assistance; developing alternative green chemistry solution to minimize health risks and environmental footprints; and promoting circular economy concepts to industries through material exchange and life cycle assessments.



Stormwater Program

- Measure W will generate approximately \$300 million annually via taxes to fund programs to improve water quality and ensure compliance with federal water regulations; create a resilient and local water supply through capture, infiltration and reuse; and develop enhanced community investments in the areas of flood protection, environmental justice, ecosystems and our local workforce.
- The Macahdo Lake project rehabilitated the lake and dam structure while installing pollutant treatment systems and replacing native vegetation to maintain TMDL compliance and enhance recreational park features. Highly treated recycled water from Terminal Island's Advanced Water Purification Facility will be used as makeup for lake evaporation, eliminating the use of potable water for this purpose.



Organic Processing Facility (OPF)

- The new OPF system currently in development will separate food waste and other digestible organics from non-processable and non-digestible materials to create a wet organic slurry. This wet slurry will be discharged into the sewer system for transfer to the Hyperion Wastewater Treatment Plant. At the plant, the slurry will be digested and converted into renewable energy – either electricity or renewable natural gas via anaerobic digestion. Digestate (the remaining solids) from the process will be further processed for use as fertilizer or soil amendment.

Learn more: LACITYSAN.ORG

