

WHAT CAN YOU DO TO PROTECT BIODIVERSITY?

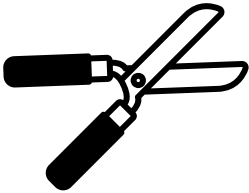
01

CREATE AND MAINTAIN WILDLIFE HABITAT:



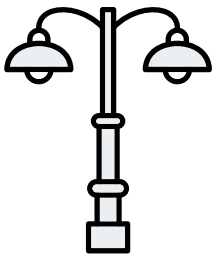
- **Plant palettes:**

- Use diverse, native planting palettes to support local biodiversity
- Do not plant species listed as invasive by the California Invasive Plant Council ([CAL-IPC](#)) or [PlantRight](#)



- **Maintenance:**

- **Pruning:** Avoid non-essential pruning during hot, dry summer months
- **Weeding:** Abate weeds onsite to combat the spread of invasive species and mitigate fire risk



- **Reduce ecological light pollution:**

- Shield outdoor lights and direct lighting downwards
- Use warmer colored lights (i.e., avoid blue-rich LEDs)



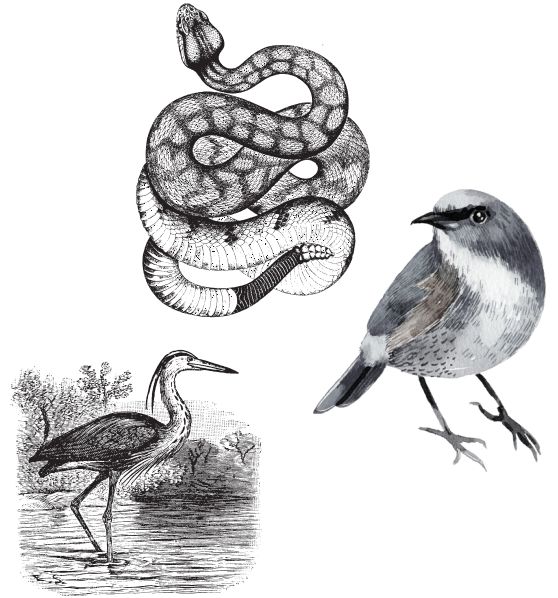
- **Capture rainwater and stormwater:**

- Install cisterns/rain barrels
- Create rain gardens or install stormwater planters
- Reduce the amount of paved, impervious surfaces
- Increase the amount of pervious surfaces

WHAT CAN YOU DO TO PROTECT BIODIVERSITY?

02 ENGAGE:

- Learn about the City's 37 indicator species in our [indicator species guide!](#)
- Post observations of wild plants and animals you see in your neighborhood to [iNaturalist](#) or [eBird](#)
- Host a neighborhood bioblitz
- Certify your yard/school/workplace as [Wildlife Habitat](#) or as an [Ocean-Friendly Garden](#)



03 BRING NATURE AND NATURE-BASED SOLUTIONS TO YOUR NEIGHBORHOOD:



- Creatively add green space and green infrastructure to small spaces (e.g., rooftop gardens, vertical gardens, container plants, window boxes), etc.
- Start composting!
- Apply compost and mulch to urban gardens
- Use sustainable, regenerative practices (e.g., avoid the use of herbicides, pesticides, and chemical fertilizers)