

# RESULTS OF THE BASELINE MEASUREMENT OF THE LA CITY BIODIVERSITY INDEX

- The LA City Biodiversity Index is a tool that assesses the presence of native plant and animal species, the quality of ecosystems, risks to native species, and management actions to steward biodiversity
- The Index is an important mechanism to raise awareness on biodiversity issues and engage new stewards in activities to protect biodiversity
- LASAN completed the first-ever measurement of the LA City Biodiversity Index in 2022
- The baseline score of the Index = 37 / 110 points

## BENCHMARK ASSESSMENT SCORE



## INDEX STRUCTURE:

- 3 Themes
- 8 Indicators
- 25 Metrics

## METRIC SCORING:

- Each metric received a score out of five
- Lowest score = 0 / 5
- Highest score = 3 / 5

## TAKEAWAYS

- Substantial work remains to be done to effectively protect biodiversity in LA and improve the index score
- Low scores = A CALL TO ACTION
- A perfect score of 110 would require significant resources and may be difficult to attain
- City Departments and stakeholders can take steps to protect biodiversity and improve the index score
- We hope these results inspire all Angelenos to engage in reversing biodiversity decline

## AVERAGE METRIC SCORE



# MAJOR TAKEAWAYS

# 8 BIODIVERSITY INDICATORS

Highlights from the Baseline Assessment of the LA City Biodiversity Index



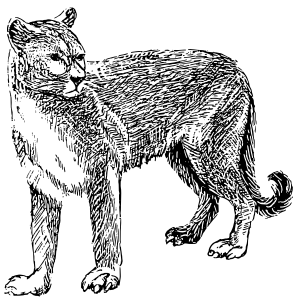
## 01a HABITAT

- 20% of the City is classified as natural or considered open space (the remaining 80% is developed)
- The average habitat quality score was calculated to be 4/10



## 01b CONNECTIVITY

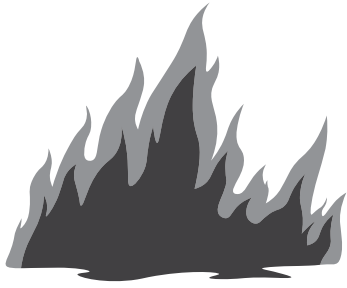
- Connectivity is vital for ecological processes including dispersal, migration, and mating
- High-resolution connectivity analysis suggests that the City is characterized by pinch-points, which constrict movement
- The City would benefit from small and large interventions that enhance wildlife connectivity through urban areas



## 02 INDICATOR SPECIES

- The City released its first official [list of charismatic umbrella indicator species!](#)
- The list includes 37 animals that are good indicators of ecosystem health, such as the mountain lion, mule deer, and western bluebird

## 03 THREATS TO NATIVE BIODIVERSITY



- Urbanization, habitat fragmentation, the spread of invasive plant species, and wildfire all threaten LA's biodiversity
- Land in LA is subjected to more frequent burns when compared to pre-settlement conditions

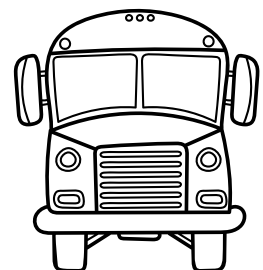
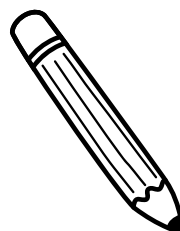
## 04 ACCESS TO BIODIVERSITY

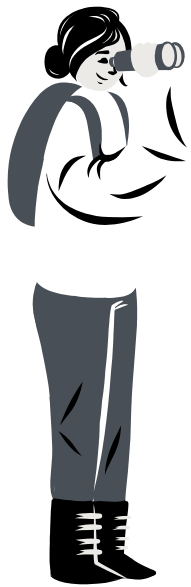
- 36.8% of land in LA is tree canopy, shrubs, or other landscapes
- 56.1% of the population is within 1/2 mi of a park or open space



## 05 EDUCATION

- 76.7% of LAUSD campuses have habitats or gardens
- The LAUSD science curriculum is State-compliant and includes biodiversity topics
- LAUSD students experience 0.2 biodiversity field trips / year





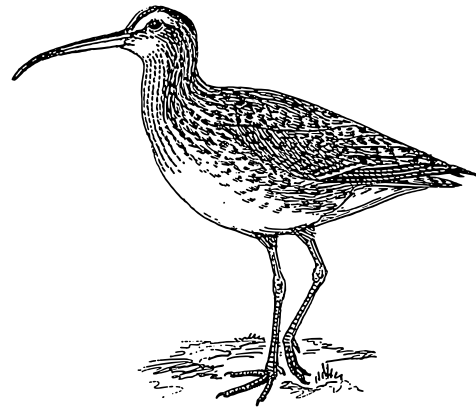
## 06 COMMUNITY ACTION

- From 2017-2020, over 925,000 individuals contributed observations to community science platforms, like iNaturalist
- 1,200 homes, schools, and businesses were certified as Wildlife Habitats or Ocean-Friendly Gardens

## 07 MANAGEMENT

61%

of natural areas in the City are legally protected



The City released the first official [Inventory of Species of Conservation Concern](#). It includes 108 species that are threatened, endangered, or sensitive.

## 08 GOVERNANCE

- 60% of City departments expected to engage with biodiversity have Biodiversity Programs & Policies
- The City does not currently have a Biodiversity Action Plan, but LASAN's Biodiversity Team plans to create one soon

